



THE FURROW PRESS

OFFERS MAGAZINE

ISSUE 2

SEPTEMBER 2018

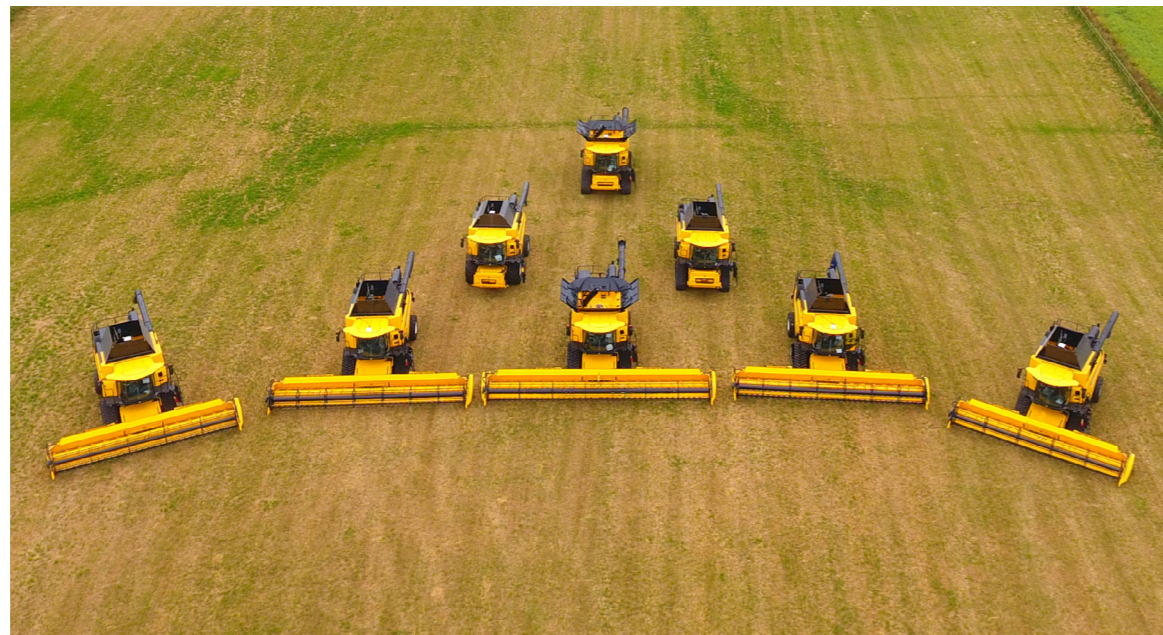


Boothferry Road
Howden
Goole
East Yorkshire
DN14 7DZ
01430 430624

Clackna Farm
East Street
Kilham
East Yorkshire
YO25 4RF
01262 420226

Owstwick Grange
Owstwick
Roos, Hull
East Yorkshire
HU12 0LH
01964 670224

COMBINES



Excellent early order discounts on all combines: TC, CX and CR

Contact your area representative to get you the best price NOW



Excellent Finance Packages Available

New Power Harrows:

- Aquilla Rapido 6M
- Dominator Rapido 3M

MASCHIO

Demonstrators:

- Unico M5 Furrow
- Unico L6 Furrow
- 3M Dominator Rapido (DMR) Power Harrow



Last Few Flails in Stock:

- Girrafona 260 Z-Flail
- Buffalo 280 Front & Rear Flail



Special Deals on all Ex-Show / Ex-Demonstration

POLARIS

Available:

- Ranger XP 900 - ½ Cab
- Ranger Diesel - Roof & Rear Panel
- ATV Sportsman 570 EPS
- Ranger 150 Youth (Coming Soon!)



Contact your area representative for more information.

T7.315 HD

Our New Holland T7.315 Heavy Duty Tractor did a demonstration in the Holderness area this harvest.



It displayed its fantastic lugging power pulling an eight-furrow reversible plough in very hard and dry conditions from this summers heat wave!



Demonstrators & Ex-Demonstrators Available:

New Holland:

- CR8.90 with 30ft Varifeed Header
- CX7.90 with 22ft Varifeed Header
- BB 1290 Plus Baler
- T7.315 HD AC
- T7.260 Sidewinder
- T7.210 Sidewinder
- T6.180 EC
- T6.175 DCT

Other:

- Maschio Unico M5 Furrow
- Maschio Unico L6 Furrow
- Maschio 3M DMR
- Polaris Ranger XP900
- Polaris Ranger Diesel
- Polaris Sportsman 570
- Del Marino 1.58M Semi Offset Flail

BOOK YOURS TODAY!

You can book a demonstration of ANY of our machinery now. Call:

HOWDEN

Chris Smith - 07384 814141

Christian Townend - 07376 136119

KILHAM

Jim Richardson - 07376 496093

Sam Illingworth - 07908 504701

OWSTWICK

Mike Cowell (M.D) - 07703 466122

Only available at our Howden and Kilham depots



SHOTGUN CARTRIDGES

Prices correct at time of press



Bulk orders now being taken at HOWDEN



GAUGE	TYPE	LOAD GRAM	CASE LENGTH SHOT	WAD	FPS	PRICE + VAT	PRICE inc. VAT
410	High Pheasant	19	6	76mm plastic	1400	£6.81	£8.17
	Game and Clay	11	6	65mm Plastic	1300	£6.28	£7.53
	Game and Clay	11	7	65mm Plastic	1300	£6.28	£7.53
28	Game and Clay	18	6	65mm Fibre	1350	£6.34	£7.61
	Game and Clay	18	7	65mm Fibre	1350	£6.35	£7.62
	High Pheasant	23	5	70mm Fibre	1350	£6.85	£8.22
	High Pheasant	23	6	70mm Fibre	1350	£6.85	£8.22
	High Pheasant	23	7	70mm Fibre	1350	£6.85	£8.22
20	High Pheasant	25	6	70mm Fibre	1430	£6.62	£7.94
	Pro Twenty	24	7.5	70mm Fibre	1400	£5.42	£6.50
	High Pheasant Extreme	28	5	70mm Fibre	1430	£7.02	£8.42
	High Pheasant Extreme	30	6	70mm Fibre	1360	£7.23	£8.67
12	Imperial Game	30	5	65mm Fibre	1450	£7.11	£8.53
	Imperial Game	30	6	65mm Fibre	1450	£7.11	£8.53
	Imperial Game	28	6	65mm Fibre	1450	£6.90	£7.44
	High Pheasant	30	5	67mm Fibre	1450	£7.23	£8.67
	High Pheasant	30	6	67mm Fibre	1450	£7.23	£8.67
	High Pheasant	32	4	67mm Fibre	1450	£7.41	£8.89
	High Pheasant Extreme	32	6	70mm Fibre	1450	£7.42	£8.90
	High Pheasant Extreme	32	5	70mm Fibre	1450	£7.64	£9.16
	High Pheasant Extreme	34	4	70mm Fibre	1450	£8.02	£9.62
	High Pheasant Extreme	36	4	70mm Fibre	1400	£8.53	£10.23
	Driven Grouse	30	6.5	67mm Fibre	1450	£8.34	£10.00
	S/Fast HV Pigeon	29	6	70mm Fibre	1425	£5.43	£6.51
S/Fast HV Pigeon	29	6	70mm Plastic	1425	£5.30	£6.36	
Special Pigeon	32	6	70mm Fibre	1425	£6.00	£7.20	
Comp X	28	7.5	65mm Fibre	1375	£4.55	£5.46	
Sovereign-Parcours	28	6.5	70mm Plastic	1600	£6.09	£7.30	
Sovereign-Parcours	28	8	70mm Plastic	1600	£6.09	£7.30	
Superfast Clay	27	7.5	70mm Fibre	1500	£4.80	£5.76	
Superfast Clay	25	7.5	70mm Plastic	1500	£5.30	£6.36	
Extreme Hunting	50	BB	75mm/3" Plastic	1375	£10.99	£13.18	

In 2016 we saw a dramatic change in the regulations governing the sale of rodenticides (rat bait). The ThinkWildlife group defined that clear amateur and professional rodenticide pack labelling should be introduced and certification required for sale was needed.

As of 1st March 2018 all amateur packs will reduce in size from 1.5kg down to 300g. The active ingredient shall also be reduced from 50 ppm down to 30 ppm. Professional packs will start from 3 kg and the active ingredient ratio shall stay the same.

All sales of professional packs will need a farm assurance scheme number or a CRRU approved certificate.

RODENTICIDE REGULATIONS FOR 2018

Important changes to take place



For more information please ask a member of staff.

RAT BAIT



Slaymore 13160
12kg Rat Bait
£51.43 + VAT



Slaymore 13161
20kg Rat Bait
£75.71 + VAT



Slaymore 13163
6kg Rat Pack
£42.86 + VAT



Tomcat 1560
4kg Rat Pack
£48.73 + VAT



Tomcat 1598
10kg Pellets
£70.71 + VAT



Tomcat 1599
8kg Blocks
£67.86 + VAT



Sorex 1562
Bait Box
£13.26 + VAT



Sorex 18194
Wide Piper
£21.17 + VAT



Jaguar 20779
4kg Ratbait
£53.00 + VAT



Neosorex 1531
3kg Ratbait
£25.72 + VAT



Neosorex 1532
5kg Rat Pack
£44.29 + VAT



Neosorex 1533
10kg Ratbait
£58.57 + VAT



Neosorex 1537
2.5kg Blocks
£44.29 + VAT

FORKLIFT THOROUGH EXAMINATIONS

We have certified CFTS trained staff that can offer examinations on any make of telescopic handler.

Under UK law, EVERY fork lift truck must have a valid Thorough Examination certificate. CFTS sets the national standard for this vital, regular inspection.

To provide clarity, the industry's major trade associations worked together - in consultation with the Health and Safety executive - to give clear, definitive procedures and consistent high standards for a safe and genuine Thorough Examination. The result is Consolidated Fork Truck Services (CFTS): the national accreditation scheme for Thorough Examination, specifically for companies who service forklift trucks.

The distinctive CFTS mark: it's your guarantee that a Thorough Examination is full and valid under law, and will be carried out by a fully trained engineer in accordance with strict quality procedures.

To book your examination please contact Mick Ward:
mick.ward@robertdwebster.co.uk / 01430 430624



Most non-CFTS inspections meet LOLER 98 requirements

Only a CFTS accredited Thorough Examination is guaranteed to check the whole Manitou machine... so you know it's really safe to use and you're covered for both LOLER 98 and PUWER 98 regulations.

They will check...

CHAINS*

Extension chain failure is critical, but the wear, elongation or corrosion that can cause it are gradual and tricky to spot: a change of just 2% is a cause for concern. Chains must be checked carefully, in at least three places, along with anchors and pulleys.

*MT1840 & MRT only.

TILT MECHANISM

To enable safe operation, the tilt must move in an even controlled way and the compensation system must keep the forks level in the full range of travel. It must also be checked for damage, scoring and circuit relief valve operation.

CARRIAGE & TILT LINKAGE

The carriage and tilt linkage should be free from distortion and cracking. All linkage and bushes should be checked for wear and the security of pins confirmed.

BOOM

The boom must be inspected throughout its full range of extension and movement, to ensure the smooth, safe operation and structural integrity.

Boom wear pad adjustment should also be checked.

CONTROLS

As well as the controls themselves, which must all be fully functional, securely mounted and clearly marked, all linkages and cables must be inspected to prevent potential failure through damage, corrosion or wear.

LOAD CHARTS & SERIAL NUMBER PLATE

Clear rating information is absolutely critical to the safe operation of any telescopic for lift. Load charts should be available for all attachments used.

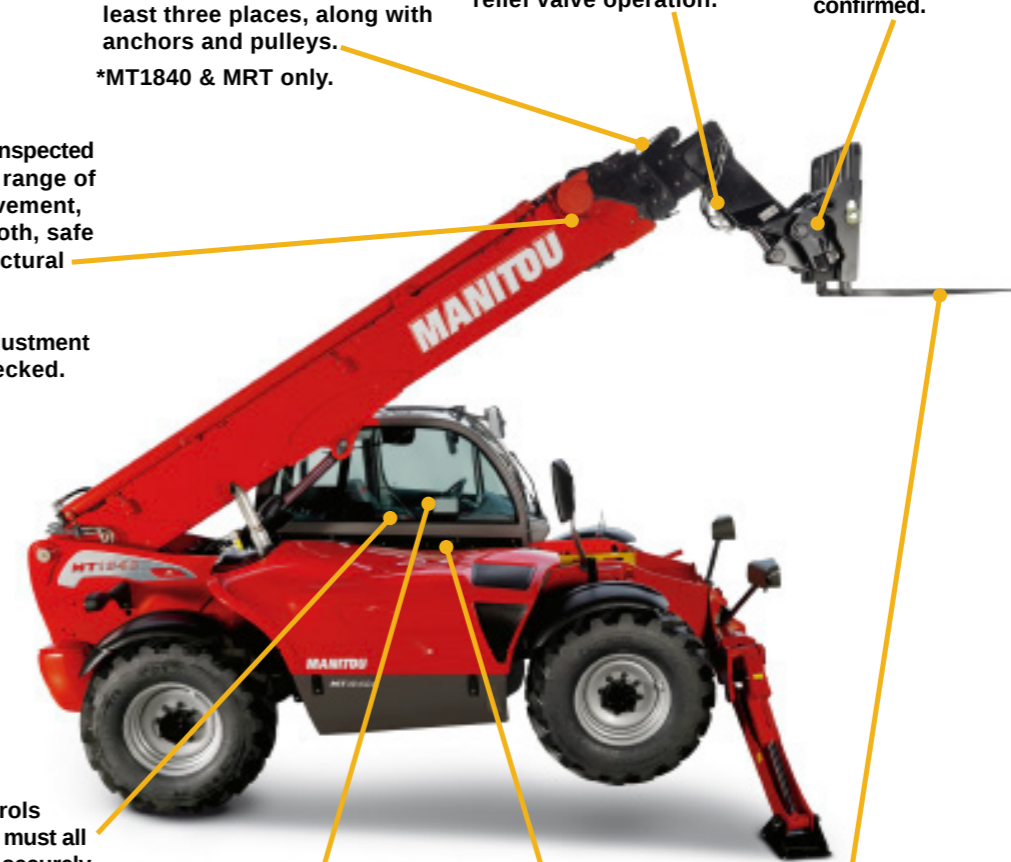
HYDRAULIC SYSTEM

The hydraulic system check is a major task, covering all hoses, pipes, cylinders and reservoir, along with a prolonged load test to rule out unacceptable descent.

FORKS

Fork arms are subject to constant abrasion and stress, making them particularly vulnerable. They must be of correct capacity, meet ISO 5057 for wear, and must not be cracked, deformed, or damaged. Fork location and end stops are also checked.

The fork carriage and load guard must also be checked.



But a Manitou/CFTS Thorough Examination ALSO checks...

SEAT & MOUNTING

The seat mounting must be absolutely secure. The operation of the seat suspension system must also be checked for correct operation. Seat belts will also be checked.

STEERING

To ensure the truck can be operated safely, all mechanical and hydraulic steering parts are inspected for signs of failure, corrosion, damage or excessive wear. Proper steering response in all modes is confirmed by maneuvering the machine at low speed.

CHASSIS

The chassis is inspected for cracking and signs of damage, with particular attention paid to welds and ram mountings.

SAFETY SYSTEMS

The correct calibration and operation of all safety systems are checked and where appropriate diagnostic codes are recovered with PAD.

CAB

The cab structure and ROPS and FOPS protection are checked.

COUNTERWEIGHT

The counterweight can weigh two tonnes or more and is required for truck stability. All fastenings must be secure and undamaged.

ENGINE & TRANSMISSION

The prime mover and the transmission are inspected. As well as the engine the exhaust system is also checked.

BRAKES

A CFTS examination covers both the service and parking brakes - checking all hydraulics, mountings, pedals, levers, linkages and adjustment to check brakes operate exactly as per specifications. Trailer braking valve operation will also be checked if fitted.

WHEELS & TYRES

Wheel and tyre assemblies will be checked to ensure they are fixed securely, and free from damage or excessive wear. Tyres will be checked for the correct specification as detailed in the operator's manual.



BERTHOUD

Main Dealers

Normal Price
£180 + VAT

LTO Price
£165 + VAT

INTRODUCTORY OFFER FOR A LIMITED TIME ONLY

We can now test agricultural spraying equipment to NSTS standard.

We are authorised to test, repair and certify fully mounted, trailed, quad mounted etc.



SPRAY TESTING

Call: 01262 420226

Email: mick.ward@robertdwebster.co.uk



Look out for future competitions on our Facebook page.

COMPETITION WINNER

Cover image taken by Rob Campey

To celebrate the Farmers Guardian's #FARM24 event we held a photo competition where you submitted your best photos of the New Holland machinery we supplied you, working hard, helping produce *the best of British food*, the theme of this years FG celebration.

We had so many wonderful entries it was so hard for us to narrow it down to just five, so we chose SIX. Then our facebook followers chose the winner, and it was Rob Campey with our beautiful cover shot.

WE ARE STILL MOVING!

From Kilham to Cranswick



We were asked by the council to remove our sign from outside the new depot site due to health and safety reasons...

but we are definitely still moving!

Come In



and See Us!



We don't just sell tractors and combines. At each of our depots is a country store with everything from towing equipment to garden tools to domestic cleaners and lots more... come have a look around!

**Boothferry Road
Howden
Goole
East Yorkshire
DN14 7DZ
01430 430624**

**Clackna Farm
East Street
Kilham
East Yorkshire
YO25 4RF
01262 420226**

**Owstwick Grange
Owstwick
Roos, Hull
East Yorkshire
HU12 0LH
01964 670224**